

PE 492/592 ADVANCED THEORY AND COACHING OF BASKETBALL

This course will be an intense training and review of coaching theory. Topics to be covered include: Man-to-man defense, motion offense/zone offense, trapping offense, special plays and sets, the match-up zone, developing your post and perimeter players, using and defending the 3-point shot, the transition game, individual development workouts, preparing for games, special situations and more.

You can earn 1 (one) Northern State University college credit (undergraduate or graduate) for only \$40 by attending the following clinic!

Clinic Name: *Indiana Basketball Coaches Association*

Clinic Dates & Times: Friday, April 25: 12 p.m. - 10 p.m.
Saturday, April 26: 8:30 a.m. - 12:30 p.m.

Clinic Location: Lawrence North High School
Indianapolis, Indiana

Clinic Contact Name: Steve Witty

Clinic Contact Info: wwitty@indy.rr.com, (317) 837-1606

Web site: www.IBCAcoaches.com

****For more information on obtaining college credit for recertification or as an elective for your undergraduate or graduate degree, please contact Steve Smiley at NSU with the contact information below.****

****NSU recommends you contact your school district prior to registering for the course to confirm the credit will be accepted.**

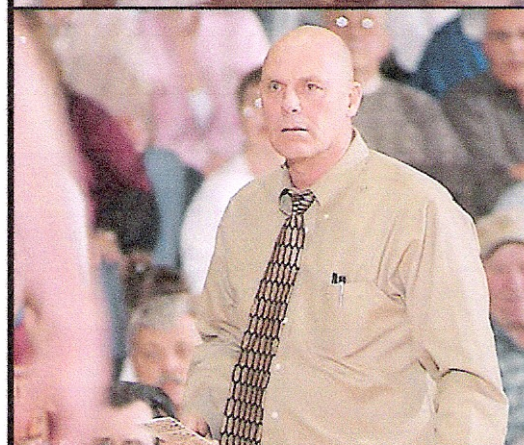
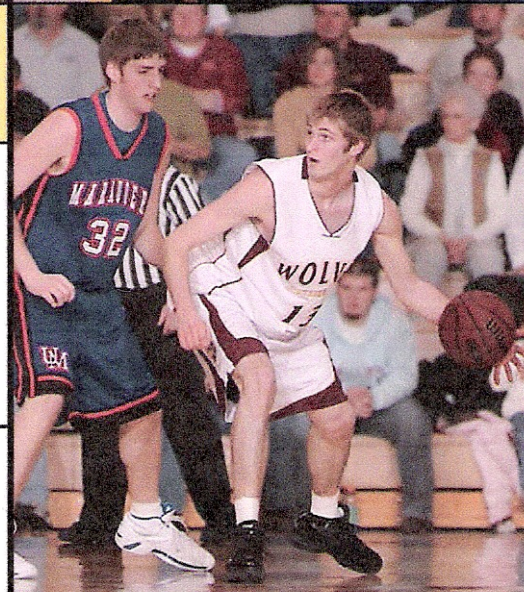
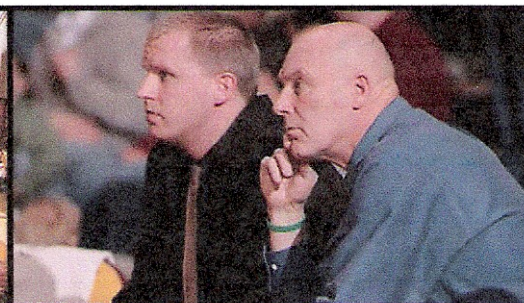
FOR MORE INFORMATION on NSU CREDIT, CONTACT

NSU OFFICE OF EXTENDED STUDIES

Steve Smiley, Director of Extended Studies and Assistant Men's Basketball Coach
1200 S. Jay Street, Aberdeen, SD 57401 | PHONE: 605-626-2568
E-MAIL: scsmiley@northern.edu

NSU WOLVES BASKETBALL

PHONE: 605-626-2230
www.coachmeyer.com
www.nsuwolvesathletics.com



COACH DON MEYER

Second winningest NCAA coach in the history of basketball

